

Sälenführungsgestelle

Die sets

A **Portastampi**

Jarmi

Vodící stojánky

Führungselemente

Guide elements

B **Elementi di guida**

Vodilni elementi

Vodící elementy

Schneidelemente

Cutting elements

C **Elementi di taglio**

Rezilni elementi

Střížné díly

Federelemente

Springs & elastomers

D **Molle ed elastomeri**

Vzmeti in elastomeri

Pružiny a elastomery

Zubehör

Accessories

E **Accessori**

Pripomočki

Příslušenství

F **Info**

A

**SÄULENFÜHRUNGSGESTELLE / DIE SETS / PORTASTAMPI
JARMI / VODÍCÍ STOJÁNKY**

11-1

11-4



Normgestelle

Standard die sets

Portastampi standard

Standardní jarmi

Standardní vodící stojánky

Sondergestelle

Custom made die sets

Portastampi su richiesta

Jarmi po naročilu

Vodící stojánky na zakázku

11-5

11-8



Normgestelle

Standard die sets

Portastampi standard

Standardní jarmi

Standardní vodící stojánky

Sondergestelle

Custom made die sets

Portastampi su richiesta

Jarmi po naročilu

Vodící stojánky na zakázku

INFO

11-9



Säulengestelle toleranzen

Die sets Tolerances

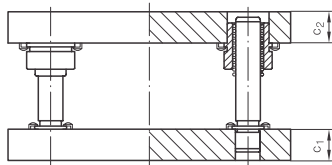
Portastampi - tolleranze

Jarmi - tolerance

Vodící stojánky - tolerance

BITTE KOPIEREN
PLEASE COPY
COPIARE PREGO
PROSIMO KOPIRAJTE

Normgestelle
Standard die sets
Portastampi standard
Standardni jarmi

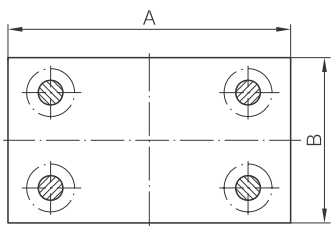


P2
Platte 2 / Plate 2
Piastra 2 / Plošča 2

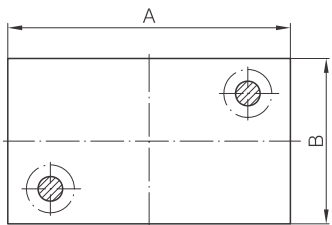
P1
Platte 1 / Plate 1
Piastra 1 / Plošča 1

Y - Kombination der Platten dicke
Y - Combination of plates thickness
Y - Combinazione dei spessori piastre
Y - Kombinacija debelin plošč

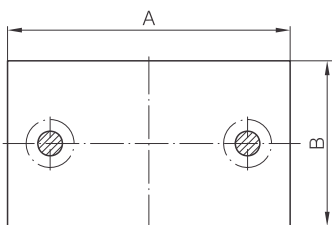
1112 ISO A _____ x B _____ x Y _____



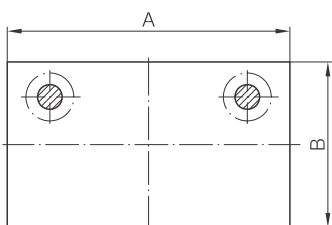
1122 ISO A _____ x B _____ x Y _____



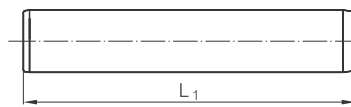
1132 ISO A _____ x B _____ x Y _____



1142 ISO A _____ x B _____ x Y _____

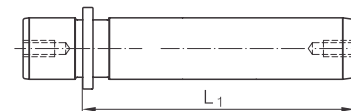


Führungssäulen / Guide pillars / Colonne di guida / Vodilni stebri



1200 ISO

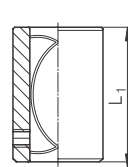
P1 L₁ = _____



1210 ISO

P1 L₁ = _____

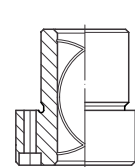
Führungsbuchsen / Guide bushes / Bussole guida / Vodilne puše



1230 ISO



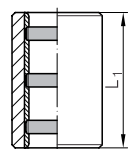
1231_ ISO



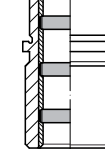
1232_ ISO

P2 L₁ = _____ 1231_ ISO 1232_ ISO

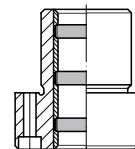
Führungsbuchsen, stahl-bronze mit Festschmierstoff / Self lubricating guide bushes
Bussole guida con lubrificante solido / Samomazalne vodilne puše



1240 ISO



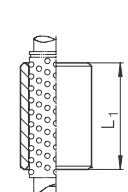
1241_ ISO



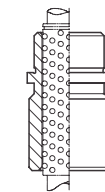
1242_ ISO

P2 L₁ = _____ 1241_ ISO 1242_ ISO

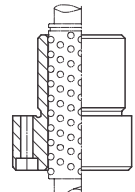
Kugelführungsbuchsen / Ball bearing guide bushes
Bussole di guida a sfere / Krogljčne vodilne puše



1250 ISO



1251_ ISO

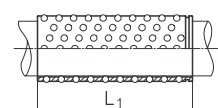


1252_ ISO

P2 L₁ = _____ 1251_ ISO 1252_ ISO

H **V**

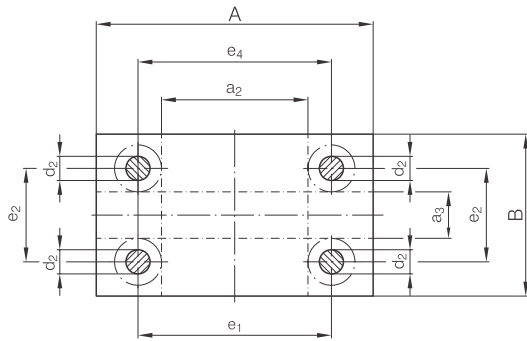
3 x d₁ ≤ 32
4 x d₁ ≥ 38



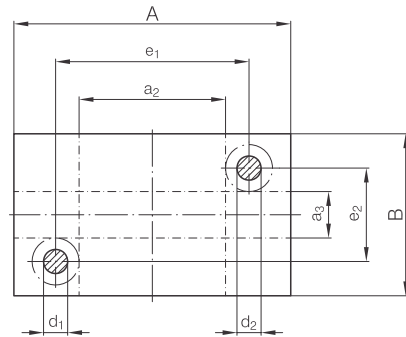
1259 ISO

P2 L₁ = _____

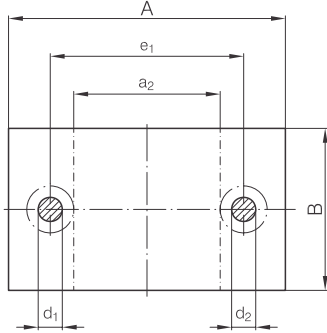
1112 ISO



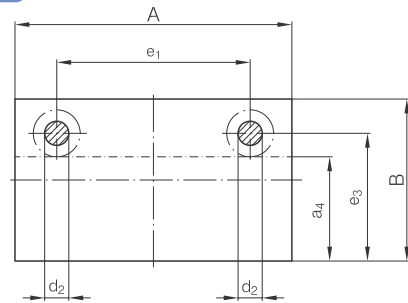
1122 ISO



1132 ISO



1142 ISO



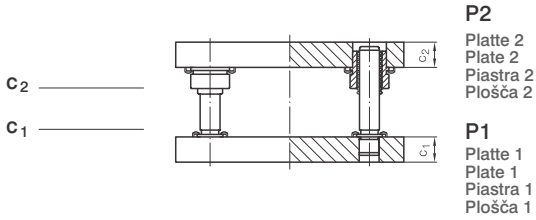
$a_2 \times B$	$A \times a_3$	$A \times a_4$	d_1	d_2	e_1	e_2	e_3	e_4	C_1	C_2	Y	$A \times B$	
60 x 80	-	-	19	20	100	-	-	-	32	32	1	160 x 80	
60 x 100	-	160 x 50							70	32	32	1	160 x 100
60 x 125	-	160 x 75							95	32	32	1	160 x 125
60 x 160	160 x 60	160 x 110							100	130	103	32	32
70 x 100	-	-	24	25	120	-	-	-	40	40	1	200 x 100	
									40	32	2		
									32	40	3		
									32	32	4		
70 x 125	-	200 x 60	24	25	120	-	85	-	40	40	1	200 x 125	
									40	32	2		
									32	40	3		
									32	32	4		
70 x 160	-	200 x 95	24	25	120	-	120	-	40	40	1	200 x 160	
									40	32	2		
									32	40	3		
									32	32	4		
70 x 200	200 x 70	200 x 135	24	25	120	120	160	123	40	40	1	200 x 200	
									40	32	2		
									32	40	3		
									32	32	4		
120 x 125	-	250 x 60	24	25	170	-	85	-	40	40	1	250 x 125	
									40	32	2		
									32	40	3		
									32	32	4		
120 x 160	-	250 x 95	24	25	170	-	120	-	40	40	1	250 x 160	
									40	32	2		
									32	40	3		
									32	32	4		
120 x 200	250 x 70	250 x 135	24	25	170	120	160	173	40	40	1	250 x 200	
									40	32	2		
									32	40	3		
									32	32	4		
120 x 250	250 x 120	250 x 185	24	25	170	170	210	173	40	40	1	250 x 250	
									40	32	2		
									32	40	3		
									32	32	4		
165 x 160	-	315 x 85	30	32	225	-	115	-	50	50	1	315 x 160	
									50	40	2		
									40	50	3		
									40	40	4		



a ₂ x B	A x a ₃	A x a ₄	d ₁	d ₂	e ₁	e ₂	e ₃	e ₄	C ₁	C ₂	Y	A x B								
165 x 200	315 x 50	315 x 125	30	32	225	110	155	228	50	50	1	315 x 200								
									50	40	2									
						40	50		3											
						40	40		4											
165 x 250	315 x 100	315 x 175				225	160		205	228	50	50	1	315 x 250						
											50	40	2							
165 x 315	315 x 165	315 x 240			225	270	228	50	50	1	315 x 315									
								50	40	2										
250 x 200	400 x 50	400 x 125			30	32	310	110	155	313		40	50	3	400 x 200					
												40	40	4						
250 x 250	400 x 100	400 x 175						310	160		205	313	50	50		1	400 x 250			
													50	40		2				
250 x 315	400 x 165	400 x 240	310	225				270	313		40	50	3	400 x 315						
											40	40	4							
250 x 400	400 x 250	400 x 325	310	355			313	50	50	1	400 x 400									
								50	40	2										
330 x 250	500 x 80	500 x 165	38	40			400	150	200	403		40	50	3	500 x 250					
												40	40	4						
								330 x 315	500 x 145		500 x 240	400	215	265		403	50	50	1	500 x 315
																	50	40	2	
330 x 400	500 x 230	500 x 315			400	300		350	403		40	50	3	500 x 400						
											40	40	4							
330 x 500	500 x 330	500 x 415			400	450	403	50	50	1	500 x 500									
								50	40	2										
430 x 315	630 x 115	630 x 215			48	50	510	195	255	513		40	50	3	630 x 315					
												40	40	4						
								430 x 400	630 x 200		630 x 300	510	280	340		513	63	63	1	630 x 400
																	63	50	2	
430 x 500	630 x 300	630 x 400	510	380				440	513		50	63	3	630 x 500						
											50	50	4							
430 x 630	630 x 430	630 x 530	510	570			513	63	63	1	630 x 630									
								63	50	2										
510 x 400	710 x 200	710 x 300	48	50			590	280	340	593		50	63	3	710 x 400					
												50	50	4						
								510 x 500	710 x 300		710 x 400	590	380	440		593	63	63	1	710 x 500
																	63	50	2	
510 x 630	710 x 430	710 x 530			590	510		570	593		50	63	3	710 x 630						
											50	50	4							
600 x 400	800 x 200	800 x 300			48	50	680	280	340	683	63	63	1		800 x 400					
											63	50	2							
								600 x 500	800 x 300		800 x 400	680	380	440		683	50	63	3	800 x 500
																	50	50	4	
600 x 630	800 x 430	800 x 530						680	510		570	683	63	63	1	800 x 630				
													63	50	2					
600 x 630	800 x 430	800 x 530	680	510			570	683	50	63	3	800 x 630								
									50	50	4									

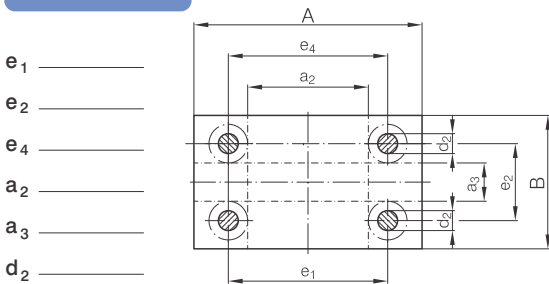
BITTE KOPIEREN
PLEASE COPY
COPIARE PREGO
PROSIMO KOPIRAJTE

Sondergestelle
Custom made die sets
Portastampi su disegno
Jarmi po naročilu



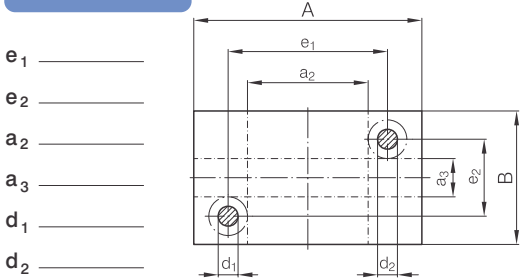
1112 ISO

A _____ x B _____



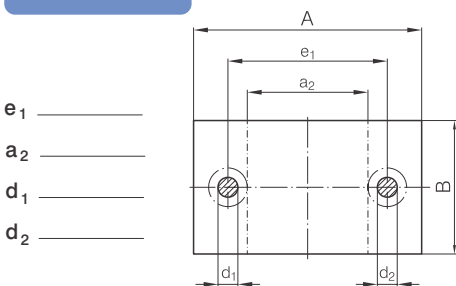
1122 ISO

A _____ x B _____



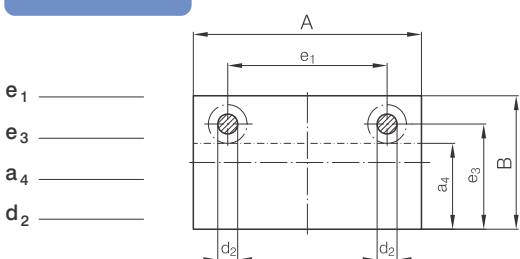
1132 ISO

A _____ x B _____

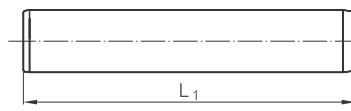


1142 ISO

A _____ x B _____



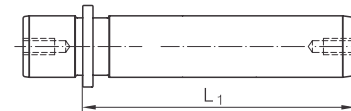
Führungssäulen / Guide pillars / Colonne di guida / Vodilni stebri



1200 ISO

P1

L₁ = _____

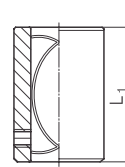


1210 ISO

P1

L₁ = _____

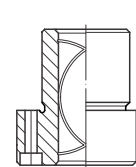
Führungsbuchsen / Guide bushes / Bussole guida / Vodilne puše



1230 ISO



1231_ ISO



1232_ ISO

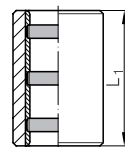
P2

L₁ = _____

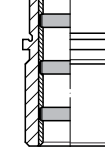
1231_ ISO

1232_ ISO

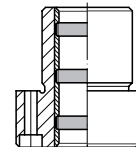
Führungsbuchsen, stahl-bronze mit Festschmierstoff / Self lubricating guide bushes
Bussole guida con lubrificante solido / Samomazalne vodilne puše



1240 ISO



1241_ ISO



1242_ ISO

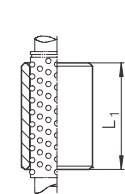
P2

L₁ = _____

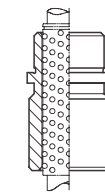
1241_ ISO

1242_ ISO

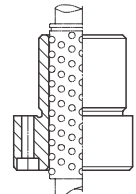
Kugelführungsbuchsen / Ball bearing guide bushes
Bussole di guida a sfere / Krogljčne vodilne puše



1250 ISO



1251_ ISO



1252_ ISO

P2

L₁ = _____

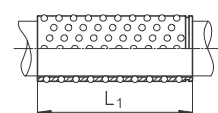
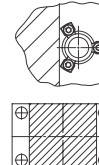
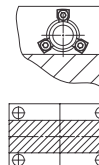
1251_ ISO

1252_ ISO

H

V

3 x d₁ ≤ 32
4 x d₁ ≥ 38



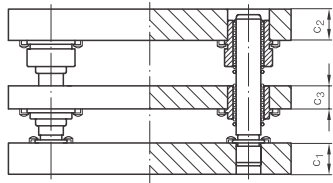
1259 ISO

P2

L₁ = _____

BITTE KOPIEREN
PLEASE COPY
COPIARE PREGO
PROSIMO KOPIRAJTE

Normgestelle
Standard die sets
Portastampi standard
Standardni jarmi



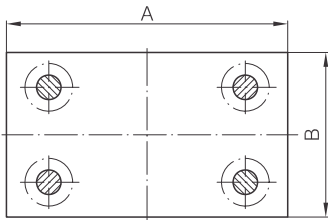
P2
Platte 2 / Plate 2
Piastra 2 / Plošča 2

P3
Platte 3 / Plate 3
Piastra 3 / Plošča 3

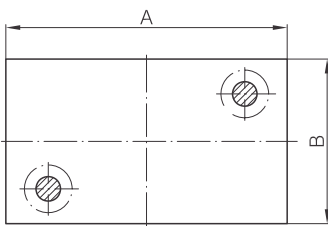
P1
Platte 1 / Plate 1
Piastra 1 / Plošča 1

Y - Kombination der Platten dicke
Y - Combination of plates thickness
Y - Combinazione dei spessori piastre
Y - Kombinacija debelin plošč

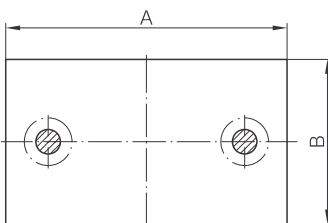
1113 ISO A _____ x B _____ x Y _____



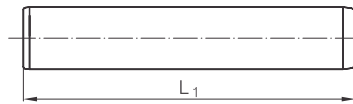
1123 ISO A _____ x B _____ x Y _____



1133 ISO A _____ x B _____ x Y _____



Führungssäulen / Guide pillars / Colonne di guida / Vodilni stebri



1200 ISO

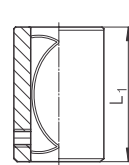
P1 L₁ = _____



1210 ISO

P1 L₁ = _____

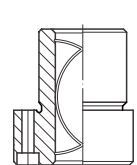
Führungsbuchsen / Guide bushes / Bussole guida / Vodilne puše



1230 ISO



1231_ ISO

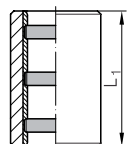


1232_ ISO

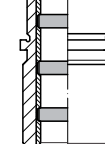
P2 L₁ = _____ 1231_ ISO 1232_ ISO

P3 L₁ = _____ 1231_ ISO 1232_ ISO

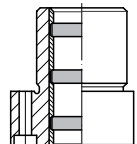
Führungsbuchsen, stahl-bronze mit Festschmierstoff / Self lubricating guide bushes
Bussole guida con lubrificante solido / Samomazalne vodilne puše



1240 ISO



1241_ ISO

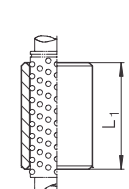


1242_ ISO

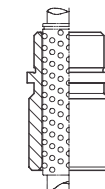
P2 L₁ = _____ 1241_ ISO 1242_ ISO

P3 L₁ = _____ 1241_ ISO 1242_ ISO

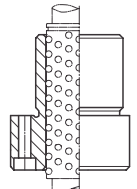
Kugelführungsbuchsen / Ball bearing guide bushes
Bussole di guida a sfera / Krogljčne vodilne puše



1250 ISO



1251_ ISO



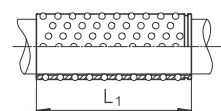
1252_ ISO

P2 L₁ = _____ 1251_ ISO 1252_ ISO

P3 L₁ = _____ 1251_ ISO 1252_ ISO

H **V**

3 x d₁ ≤ 32
4 x d₁ ≥ 38

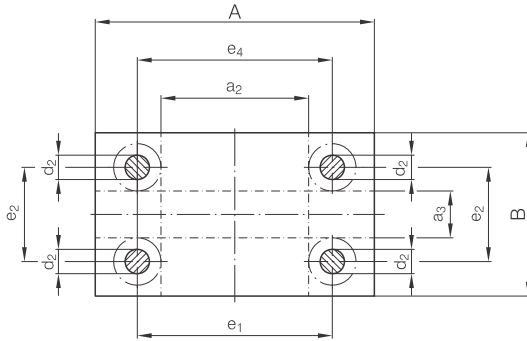


1259 ISO

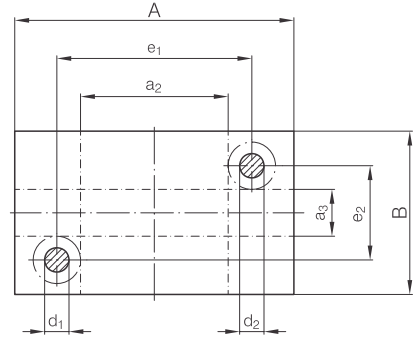
P2 L₁ = _____

P3 L₁ = _____

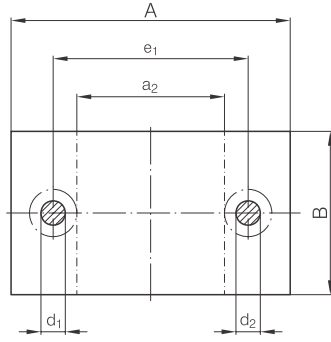
1113 ISO



1123 ISO



1133 ISO



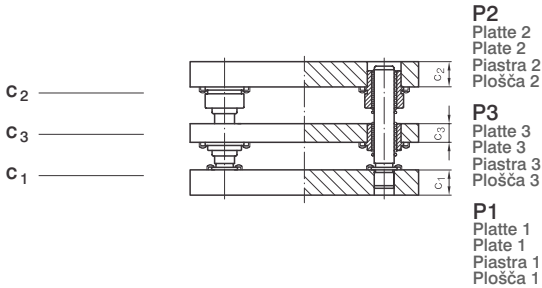
a ₂ x B	A x a ₃	d ₁	d ₂	e ₁	e ₂	e ₄	C ₁	C ₂	C ₃	Y	A x B
60 x 80	-	19	20	100	-	-	32	32	25	1	160 x 80
60 x 100							32	32		1	160 x 100
60 x 125							32	32		1	160 x 125
60 x 160							100	103		32	32
70 x 100	-	24	25	120	-	-	40	40	25	1	200 x 100
							40	32		2	
							32	40		3	
							32	32		4	
70 x 125	-	24	25	120	-	-	40	40	25	1	200 x 125
							40	32		2	
							32	40		3	
							32	32		4	
70 x 160	-	24	25	120	-	-	40	40	25	1	200 x 160
							40	32		2	
							32	40		3	
							32	32		4	
70 x 200	200 x 70	24	25	120	120	123	40	40	25	1	200 x 200
							40	32		2	
							32	40		3	
							32	40		4	
120 x 125	-	24	25	170	-	-	40	40	25	1	250 x 125
							40	32		2	
							32	40		3	
							32	32		4	
120 x 160	-	24	25	170	-	-	40	40	25	1	250 x 160
							40	32		2	
							32	40		3	
							32	32		4	
120 x 200	250 x 70	24	25	170	120	173	40	40	25	1	250 x 200
							40	32		2	
							32	40		3	
							32	32		4	
120 x 250	250 x 120	24	25	170	170	173	40	40	25	1	250 x 250
							40	32		2	
							32	40		3	
							32	32		4	
165 x 160	-	30	32	225	-	-	50	50	32	1	315 x 160
							50	40		2	
							40	50		3	
							40	40		4	



a ₂ x B	A x a ₃	d ₁	d ₂	e ₁	e ₂	e ₄	c ₁	c ₂	c ₃	Y	A x B			
165 x 200	315 x 50	30	32	225	110	228	50	50	32	1	315 x 200			
							50	40		2				
							40	50		3				
							40	40		4				
50	50						1							
50	40						2							
165 x 250	315 x 100			225	160	225	110	228		50	50	32	1	315 x 250
										50	40		2	
										40	50		3	
										40	40		4	
50	50									1				
50	40									2				
165 x 315	315 x 165	225	160	225	110	228	50	50	32	1	315 x 315			
							50	40		2				
							40	50		3				
							40	40		4				
50	50						1							
50	40						2							
250 x 200	400 x 50	30	32	310	110	313	50	50		32	1	400 x 200		
							50	40			2			
							40	50			3			
							40	40			4			
50	50						1							
50	40						2							
250 x 250	400 x 100			310	160	225	110	313	50		50	32	1	400 x 250
									50		40		2	
									40		50		3	
									40		40		4	
50	50								1					
50	40								2					
250 x 315	400 x 165	310	225	310	110	313	50	50	32	1	400 x 315			
							50	40		2				
							40	50		3				
							40	40		4				
50	50						1							
50	40						2							
250 x 400	400 x 250	310	310	310	110	313	50	50		32	1	400 x 400		
							50	40			2			
							40	50			3			
							40	40			4			
50	50						1							
50	40						2							
330 x 250	500 x 80	38	40	400	150	403	50	50	32		1	500 x 250		
							50	40			2			
							40	50			3			
							40	40			4			
50	50						1							
50	40						2							
330 x 315	500 x 145			400	215	400	150	403		50	50	32	1	500 x 315
										50	40		2	
										40	50		3	
										40	40		4	
50	50									1				
50	40									2				
330 x 400	500 x 230	400	300	400	150	403	50	50	32	1	500 x 400			
							50	40		2				
							40	50		3				
							40	40		4				
50	50						1							
50	40						2							
330 x 500	500 x 330	400	400	400	150	403	50	50		32	1	500 x 500		
							50	40			2			
							40	50			3			
							40	40			4			
50	50						1							
50	40						2							
430 x 315	630 x 115	48	50	510	195	513	63	63	40		1	630 x 315		
							63	50			2			
							50	63			3			
							50	50			4			
63	63						1							
63	50						2							
430 x 400	630 x 200			510	280	510	195	513		63	63	40	1	630 x 400
										63	50		2	
										50	63		3	
										50	50		4	
63	63									1				
63	50									2				
430 x 500	630 x 300	510	380	510	195	513	63	63	40	1	630 x 500			
							63	50		2				
							50	63		3				
							50	50		4				
63	63						1							
63	50						2							
430 x 630	630 x 430	510	510	510	195	513	63	63		40	1	630 x 630		
							63	50			2			
							50	63			3			
							50	50			4			
63	63						1							
63	50						2							
510 x 400	710 x 200	590	280	510	195	513	63	63	40		1	710 x 400		
							63	50			2			
							50	63			3			
							50	50			4			
63	63						1							
63	50						2							
510 x 500	710 x 300	590	380	510	195	513	63	63		40	1	710 x 500		
							63	50			2			
							50	63			3			
							50	50			4			
63	63						1							
63	50						2							
510 x 630	710 x 430	590	510	510	195	513	63	63	40		1	710 x 630		
							63	50			2			
							50	63			3			
							50	50			4			
63	63						1							
63	50						2							
600 x 400	800 x 200	680	280	510	195	513	63	63		40	1	800 x 400		
							63	50			2			
							50	63			3			
							50	50			4			
63	63						1							
63	50						2							
600 x 500	800 x 300	680	380	680	195	513	63	63	40		1	800 x 500		
							63	50			2			
							50	63			3			
							50	50			4			
63	63						1							
63	50						2							
600 x 630	800 x 430	680	510	680	195	513	63	63		40	1	800 x 630		
							63	50			2			
							50	63			3			
							50	50			4			
63	63						1							
63	50						2							

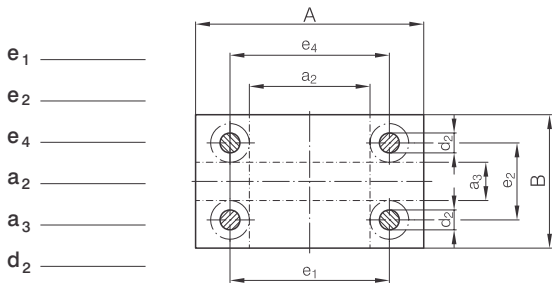
BITTE KOPIEREN
PLEASE COPY
COPIARE PREGO
PROSIMO KOPIRAJTE

Sondergestelle
Custom made die sets
Portastampi su disegno
Jarmi po naročilu



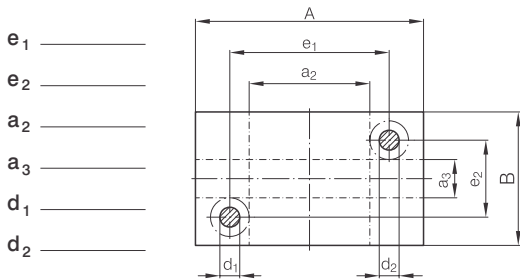
1113 ISO

A _____ x B _____



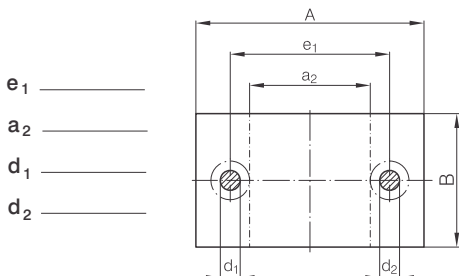
1123 ISO

A _____ x B _____

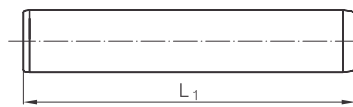


1133 ISO

A _____ x B _____



Führungssäulen / Guide pillars / Colonne di guida / Vodilni stebri

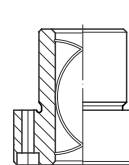
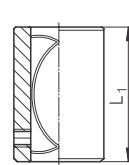


P1 $L_1 =$ _____



P1 $L_1 =$ _____

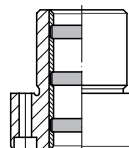
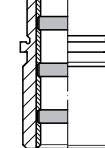
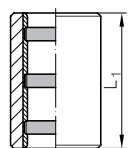
Führungsbuchsen / Guide bushes / Bussole guida / Vodilne puše



P2 $L_1 =$ _____ 1231_ ISO 1232_ ISO

P3 $L_1 =$ _____ 1231_ ISO 1232_ ISO

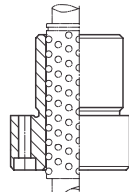
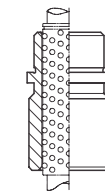
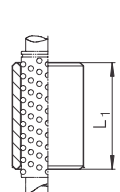
Führungsbuchsen, stahl-bronze mit Festschmierstoff / Self lubricating guide bushes
Bussole guida con lubrificante solido / Samomazalne vodilne puše



P2 $L_1 =$ _____ 1241_ ISO 1242_ ISO

P3 $L_1 =$ _____ 1241_ ISO 1242_ ISO

Kugelführungsbuchsen / Ball bearing guide bushes
Bussole di guida a sfere / Krogljčne vodilne puše

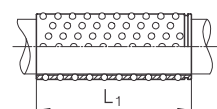
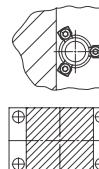
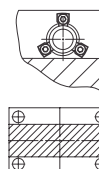


P2 $L_1 =$ _____ 1251_ ISO 1252_ ISO

P3 $L_1 =$ _____ 1251_ ISO 1252_ ISO

H **V**

3 x $d_1 \leq 32$
4 x $d_1 \geq 38$



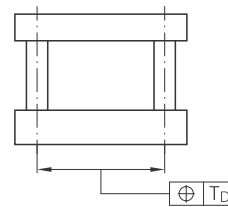
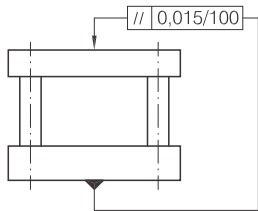
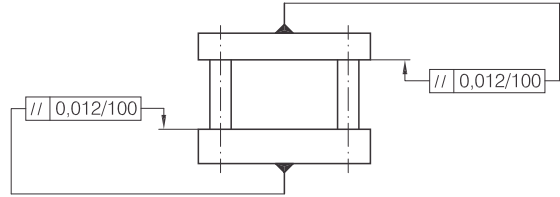
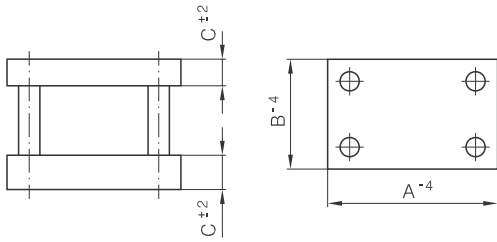
P2 $L_1 =$ _____

P3 $L_1 =$ _____

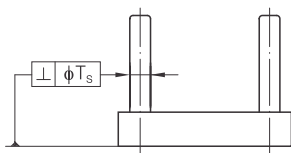
INFO

Säulengestelle toleranzen Die Sets Tolerances

Tolleranze portastampi Tolerance jarmov



T _D		
-	100 mm	= ± 0,008 mm
>	100 - 180 mm	= ± 0,010 mm
>	180 - 350 mm	= ± 0,012 mm
>	350 - 500 mm	= ± 0,015 mm
>	500 - 710 mm	= ± 0,018 mm
>	710 - 1000 mm	= ± 0,020 mm



$T_s = 0,012/100\text{mm}$

